

BULLETIN 2



2 – 6 October 2019

Be part of it!



CONTENT

1. GENERAL INFORMATION	2
2. COMPETITION INFORMATION	3
2.1 Competitions	3
2.2 Program	3
2.3 Classes	4
2.4 Participation restrictions	4
2.5 Winning times	4
3. EMBARGOED AREAS	5
4. MAPS, TERRAIN and CLIMATE	6
4.1 Maps examples, scales, and terrain descriptions	6
4.2 Climate	7
4.3 Opportunities for training	7
5. RULES, ANTI-DOPING, and TIME KEEPING	7
5.1 Rules	7
5.2 Anti-doping	8
5.3 Time keeping	8
6. ACCOMMODATION and TRAVEL	8
6.1 Accommodation	8
6.2 Transport	9
6.3 Visas	9
7. EVENT REGISTRATION	9
7.1 Entries	9
7.2 Entry fees	10
7.3 Payment details	10
8. MEDIA SERVICES	11
9. PREVIOUS ORIENTEERING MAPS	11

1 – GENERAL INFORMATION

The German orienteering federation welcomes the participants and spectators to the World Cup final, the World Masters Championships and the European Youth and Junior Championships in the Sportpark Rabenberg.

A beautiful landscape, lovely trails and hilly terrain are ideal for mountain biking. Sportpark Rabenberg is a place where sports tradition meets contemporary sports concepts; hundreds of athletes trained for the Olympic Games, European and World Championships in several summer and winter sports. Nowadays, the TrailCenter Rabenberg offers man-made mountain bike trails for different difficulty levels. In combination with the excellent infrastructure for winter sports and hiking opportunities, you will find a wide variety of physical and technical demanding mountain bike orienteering courses.

The surrounding is famous for ore mining in the past hundreds of years. Remnants of this epoch are visible and you can immerse yourself in these times while visiting old mines. The big cultural treasures of Saxony can be admired in the cities of Dresden and Leipzig, a 1 1/2 h car drive from the event centre.

Be part of some unforgettable competitions in mountain bike orienteering: just mark the date in your calendar, train, come and bring your family and friends to southeast Germany 2019.

Organisers Deutsche Ski-Orientierungslauf Gemeinschaft 2016 e.V.
c/o Diethard Kundisch
Altlaubegast 10
01297 Dresden
Germany

International Orienteering Federation (IOF)
Deutscher Turner-Bund e.V. (DTB)

Patron of the event Prime Minister of Saxony Michael Kretschmer

Event director Anke Dannowski
Head of club Bernd Kohlschmidt
Technical director Diethard Kundisch
Media service Daniel Härtel

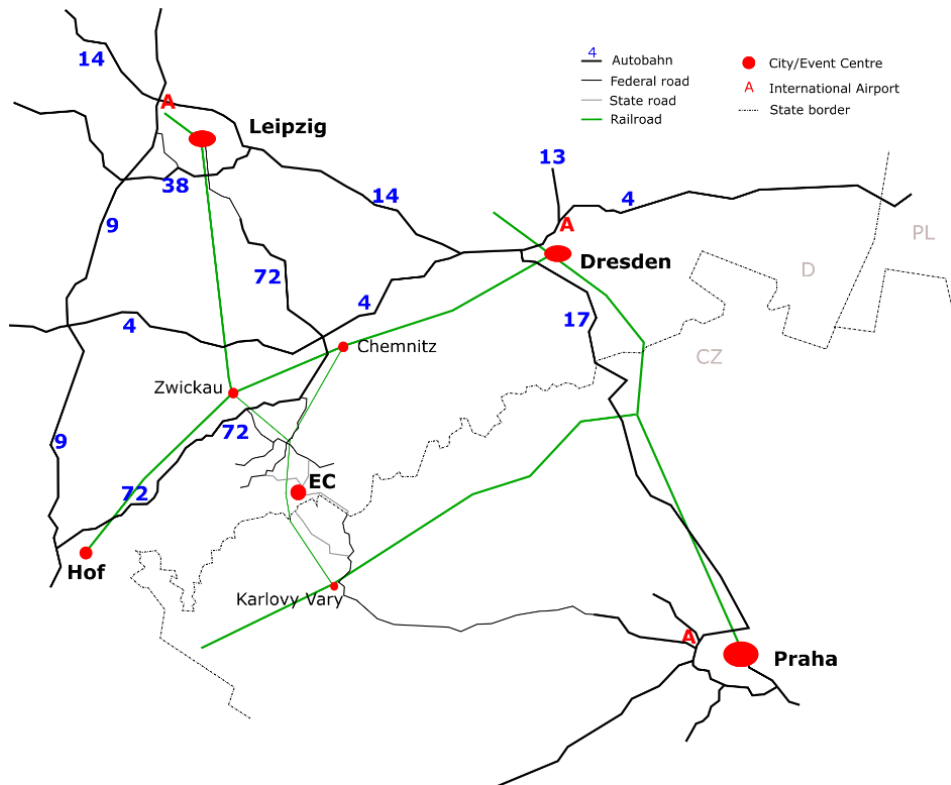
Contact +49 176 205 305 75
mtbo2019@mtbo-deutschland.de

Web page <http://2019.mtbo-deutschland.de>

IOF Event adviser Patrik Gunnarsson (SWE)
National controller Miklós Mets (HUN)

Dates 02.-06.10.2019

Venue Sportpark Rabenberg
08359 Breitenbrunn
GPS: 50°27'20.1"N 12°44'31.8"E / 50.455583, 12.742167



2 – COMPETITION INFORMATION

2.1 Competitions

World Cup Round 3 (WCup)
 European Youth and Junior Championships (EYJMTBOC)
 World Masters Championships (WMMTBOC)

Young Guns Series (YGS)
 World Masters Series (WMS)

Open races, including W/M-11, W/M-14, W/M35, E-Bike, Trail-O

2.2 Program

		General	Elite	Youth and Juniors	Masters
02.10.	Wednesday	Arrival / Training	Model Event	Model Event	Model Event
03.10.	Thursday	Arrival / Training Open Competition	Model Event	Middle	Middle
04.10.	Friday	Trail-O Open Competition	Long	Long	Long
05.10.	Saturday	Open Competition Banquet	Mixed-Relay	Relay	Mass start
06.10.	Sunday	Open Competition Departure	Sprint	Sprint	Sprint

Parallel to the main competitions we offer open races for W/M-11, W/M-14 and W/M35 age classes. E-Bike riders can ride an open course every day.

On Friday, 4th of October, you can take part in Trail-O on a special map directly in the Event Centre. This is a good opportunity to try out Trail-O and also might be a good warm-up or cool-down. Regular Trail-O participants will enjoy the course as well.

2.3 Classes

World Cup	W/M 21; mixed in relay
EYJMTBOC	W/M-17 and W/M-20
WMMTBOC	W/M 40, 45, 50, 55, 60, 65, 70, 75, 80, 85, ... (Two adjacent classes in the same decade shall be merged if either or both have fewer than 5 entries. W/M 70 and older keep the 5 year steps independent on registered starters)
YGS	W/M-17, W/M-20
WMS+	W/M 35
Open	W/M-11, W/M-14, Open-Short, E-Bike Trail-O

2.4 Participation restrictions

World Cup	Each federation may enter a team of 12 competitors - up to 6 women and 6 men in each individual event and an unlimited number of team officials.
EYJMTBOC	Each federation may enter a maximum of 4 teams of 3 riders in the mixed-relay. Each team must include at least one woman. For each individual competition a Federation may enter a maximum of 6 competitors in each class born in 1999 or later in W/M-20 and 2002 or later in W/M-17. The organising Federation may have two additional competitors as official EYJMTBOC competitors in the individual competitions. Each federation may enter a maximum of 2 teams of 3 riders in each class in the relay.
WMMTBOC	Participation in WMMTBOC is open to all competitors according to their age classes.

2.5 Winning times

Discipline	Elite	Youth	Juniors	Masters
Middle	–	32 – 37 min	40 – 44 min	50 – 55 min
Long	105 – 115 min	70 – 75 min	85 – 90 min	105 – 115 min
Relay	40 – 45 min per leg 120 – 135 min total	30 – 35 min per leg 90 – 105 min total	35 – 40 min per leg 90 – 105 min total	–
Mass start	–	–	–	75 – 85 min
Sprint	20 – 25 min	15 – 20 min	15 – 20 min	20 – 25 min

3 – EMBARGOED AREAS

The areas marked on the maps are embargoed for all orienteering activities, unless specifically permitted by the organisers. Two types of embargoed areas exist (orange and red):

The red embargoed areas are full embargoed zones. They are out of bounds for all potential participants and team members, including competitors, team leaders, coaches, doctors, escorts, and any other person who through their knowledge of the terrain may influence the results of the competitions.

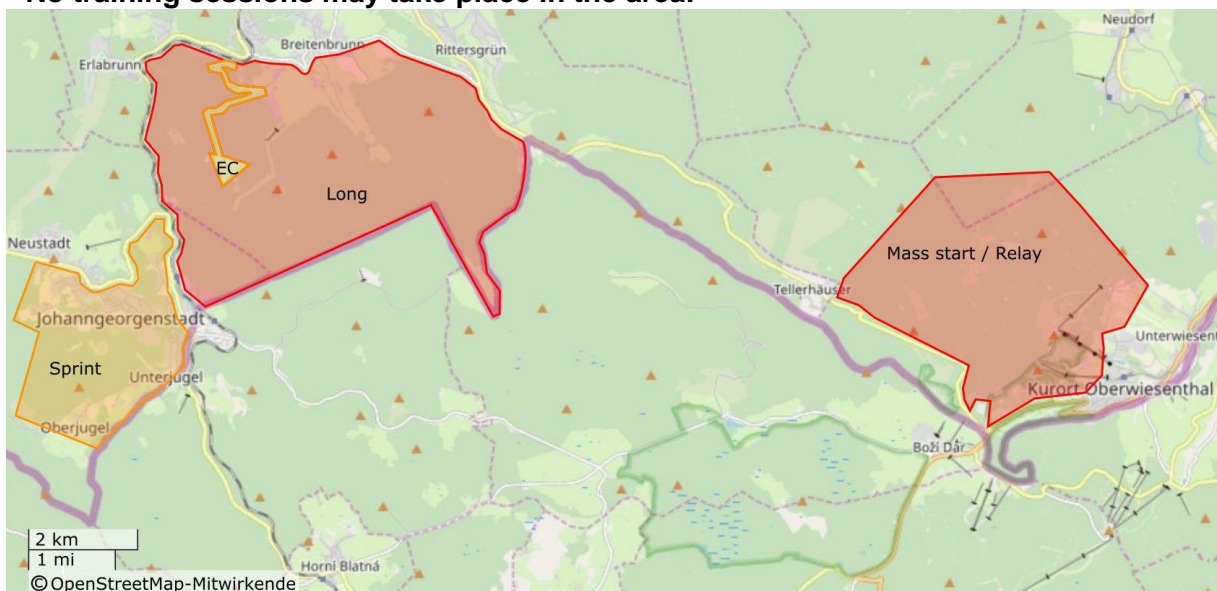
Following applies for red embargoed areas:

- **Potential participants and team members are not allowed to visit these areas with or without a map. This means no orienteering activity, no bike training session in the trail park or a leisurely activity of any kind is allowed.**

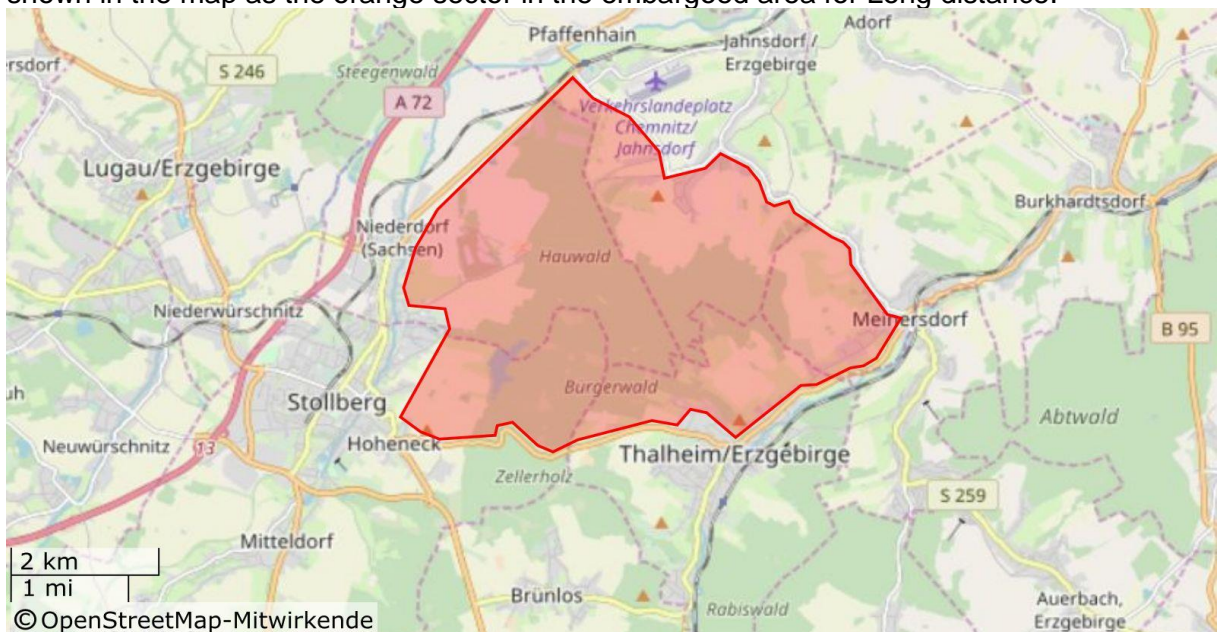
The orange embargoed areas are partially embargoed. These areas can be visited without an orienteering map. Visitors have to stay on the public road network. Any orienteering activity is restricted and it is strictly forbidden to do route testing.

Following applies for orange embargoed areas:

- **No orienteering activity may take place in the area.**
- **No training sessions may take place in the area.**



Access to the Event Centre is allowed following the official road from the North. The road is shown in the map as the orange sector in the embargoed area for Long distance.



4 – MAPS, TERRAIN and CLIMATE

4.1 Maps examples, scales, and terrain descriptions

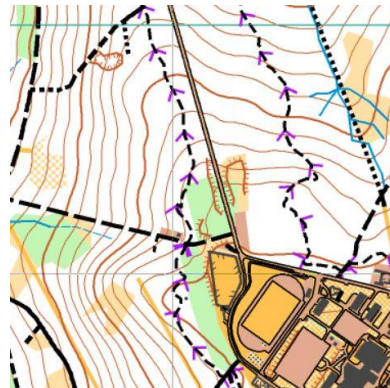
Middle

Map: Bürgerwald – Thalheim
Scale/Contour: 1 : 10 000 / 5 m
Terrain: The competition area has an altitude between 430 m and 560 m. It comprises of a medium dense track network with all kinds of rideability. The area has only a few steep climbs but is in general a smooth hilly terrain.
Distance from EC: 36 km (50 min) by car



Long

Map: Rabenberg
Scale/Contour: 1 : 15 000 / 5 m
Terrain: The competition area has an altitude between 600 m and 900 m. It comprises of a medium dense track network with all kinds of rideability. A mountain bike trail network will be used in the competitions. Some of them are one way. The area has plenty of steep climbs and descents and some flat sections. It will demand you physically.
Distance from EC: 0 m



Relay/Mass start

Map: Oberwiesenthal
Scale/Contour: 1 : 10 000 / 5 m
Terrain: The competition area has an altitude between 1050 m and 1200 m. However only a few courses will see the top of Fichtelberg. It comprises of a dense to medium dense track network with all kinds of rideability. Part of the courses will be within the ski track network and within the ski arena. The area offers a good mixture of climbs, descents, and flat sections.
Distance from EC: 23 km (30 min) by car
18 km (350 m climb) by bike



Sprint

Map: Johanngeorgenstadt
Scale/Contour: 1 : 5 000 / 5 m
Terrain: The competition area has an altitude between 880 m and 740 m. It comprises of a mixture of urban area, open land and forest areas with a medium to dense road and track network in general fast rideable. The start will be higher than the finish, most courses will climb only a few meters in smooth climbs.

Distance from EC: 13 km (17 min) by car
7 km (190 m climb) by bike



4.2 Climate

Sportpark Rabenberg is situated 860 m above sea level. The average temperature in beginning of October is around 11° C. However, the day temperature can vary strongly between 6° and 20° C. Mean temperature during night 3-8° C. Beginning of October is one of the driest periods in this area with average rain of ~16 days per month. The average precipitation is ~71 mm for October.

The area for the middle distance is situated ~500 m above sea level. While temperatures are about 5° higher, the amount of rain is similar compared to Sportpark Rabenberg.

4.3 Opportunities for training

German and Czech MTBO series:
<http://mtbo-deutschland.de/index.php/eventlist-RL.html>
<https://www.mtbo.cz/zavody/kalendar-zavodu/>

No special training camp is planned.

Training on Sunday or Monday before (29./30.09.) in Dresden. Flat terrain with a dense network of paths and tracks. Details will follow during summer.

5 – RULES, ANTI-DOPING, and TIME KEEPING

5.1 Rules

The competitions for all age classes will be organized in accordance with the Competition Rules for IOF MTB Orienteering Events, valid from 1st January 2019 and the Special Rules for the World Cup.

All Competition Rules for IOF MTBO rules are available here:
<https://orienteering.org/mtb-orienteering/rules/>

Riding, running, walking off the tracks will be strictly forbidden for all disciplines. There are no controls situated outside paths/tracks or roads.

5.2 Anti-doping

Doping is forbidden. The IOF Anti-Doping Rules apply to all age classes of this event and the IOF Council may require doping control procedures to be conducted. It is the responsibility of competitors to obtain any required TUE (therapeutic use exemption) certificate.

5.3 Time keeping

SPORTident Air+ with a working range of 180 cm will be used in all competitions.

All competitors have to use an ActiveCard (SIAC). Rental will be possible.

The back-up system is still under discussion. Further information will be provided on the website and/or in bulletin #3.

6 – ACCOMMODATION and TRAVEL

6.1 Accommodation

The event centre Sportpark Rabenberg offers several categories of accommodation from hotel to caravan and tent. They can offer up to 400 beds, while only half of them are blocked for MTBO for the moment in houses 2, 3 and 8.

Booking of the accommodation is done via Sportpark Rabenberg, directly. Please refer to "MTBO 2019". To have the competitions as fair as possible and in case you choose not to live at the event centre directly, we kindly ask athletes starting in the World Cup (elite) not to choose an accommodation in the city area of Johannegeorgenstadt.

Web page for the Event Centre: <http://www.sportpark-rabenberg.de/>

Accommodation		Meals	
House 3/8	32,00 € p. pers./night	Adults / Half board	17,00 € p. pers./day
House 2	34,00 € p. pers./night	Adults / Full board	22,50 € p. pers./day
House 1	37,50 € p. pers./night		
Extra fee for single room	15,00 € p. pers./night	Childs 9-13 years / Half board	12,50 € p. child/day
Extra fee for only 1 night	12,00 € p. pers./night	Childs 9-13 years / Full board	16,50 € p. child/day
<hr/>			
Spot for a caravan	9,00 € per night		
Spot for a tent	6,00 € per night		
Person in tent or caravan	8,50 € p. pers./night (discount for children)	Meals can be booked for tents and caravans as well.	
Power	2,00 € per night		
Shower	1,00 € per chip		
Dog	2,50 € per night		

6.2 Transport

No transport is offered by the organisers between the event centre and the competition arenas. We recommend to use private or rental cars to reach the event centre from your living area or the nearby airport. Competition arenas for long distance, mass start, and sprint are within cycling distance. Middle distance is a 50 min car drive.

Public transport (train) is available from all German Airports to Johannegeorgenstadt. There is limited space in ICE or IC trains for bicycle boxes. For transport of a build-up bicycle a reservation at least 24 h in advance is required. For local trains (RE or RB) no reservations are necessary but an extra ticket for the bike is required.

6.3 Visas

EU nationals do not require a visa to enter the Federal Republic of Germany. In general, all other foreigners require a visa for stays in Germany. A visa is not required for visits of up to 90 days in an 180-day period for nationals of those countries for which the European Community has abolished the visa requirement. You will find an overview on visa requirements here:

→ [Table of countries whose citizens require/do not require visas to enter Germany](#)

7 – EVENT REGISTRATION

7.1 Entries

Entries for World Cup, Youth and Junior European Championships and Masters World Championships shall be done via the [IOF Eventor](#). Open racers can enter via the event website.

World Cup Elite and European Youth and Junior Championships:

Team size entry by August 21st 2019

Following information is required for registration:

- Federation
- Total number of competitors of each gender
- Number of competitors in each competition
- Number of relay teams
- Number of team officials
- Name of team manager, e-mail address and mobile phone number
- Number of rental SIAC

Late entries and changes will be accepted if possible. After the entry of team size, additional entries may be made with a surcharge of 20% or more (specified in the table below). Withdrawals receive an 80% refund.

Team names entry by September 22th 2019

- Each competitor's family name and first name, gender, year of birth and the competition in which they will compete and SIAC number
- Names of the team officials

Late entries and changes are accepted if possible until 2 days before race day. After the team names deadline additional entries incur a surcharge of 50%, withdrawals receive a 50% refund.

World Masters Championships:

Entry by August 21st 2019 including full payment

Following information is required for registration:

- Family name and first name
- Club or place of residence
- Gender and year of birth
- Competition in which they will compete
- SIAC number

Late entry by September 22nd 2019 including payment with a surcharge of 20% or more (specified in the table below). Withdrawals receive an 80% refund.

Late entries after the 22.09.2019 and changes are accepted if possible. After this deadline until 3 hours prior the race additional entries incur a surcharge of 50%, withdrawals until the day prior the race receive a 50% refund.

Full payment for entry fees by 21st August 2019

7.2 Entry fees

All entry fees are in Euro. W/M-11, W/M-14 ride for free. Trail-O for 5 Euro per participant. Rent of SIAC is 4 Euro for all days.

Name	WCup	WMMTBOC	EYJMTBOC	Open / YGS / E-Bike
Accreditation fee	50 (60 / 75)	50 (60 / 75)	20 (25 / 30)	
Middle		35 (45 / 50)	20 (25 / 30)	15 (15 / 20)
Long	35 (45 / 50)	35 (45 / 50)	20 (25 / 30)	15 (15 / 20)
Mass start / Relay	105 per Team	35 (45 / 50)	60 per Team	15 (15 / 20)
Sprint	35 (45 / 50)	35 (45 / 50)	20 (25 / 30)	15 (15 / 20)
Team officials	20		20	

Fees in table for payment due to: 21.08.2019 (22.09.2019 / race day).

7.3 Payment details

Account holder: DSOG 2016 e.V.

Address: c/o Diethard Kundisch
Altlaubegast 10
01297 Dresden

IBAN: DE31 8509 0000 2683 1610 07
SWIFT/BIC: GENODEF1DRS

Bank: Dresdner Volksbank Raiffeisenbank eG

All charges/bank fees are to be paid by the sender.

8 – MEDIA SERVICES

Media representatives are invited to our event. As media representatives, you benefit from our experience of 10 years reporting from orienteering events all over the world. We have deliberately chosen a concept of short distances and offer you a wide variety of support for journalists, photographers and television staff. Ideal conditions for us means amongst others very detailed media information, a reasonable internet connection, good photo and good TV positions during the competitions, and a press centre where you can work without any time pressure after the competitions. Experienced media team members will guide you through the competition days.

Event centre, press centre and hotel - everything is concentrated at Sportpark Rabenberg. The press centre is located in a separate building at the event centre.

If you are interested, we invite you to get impressions of the region outside the event.

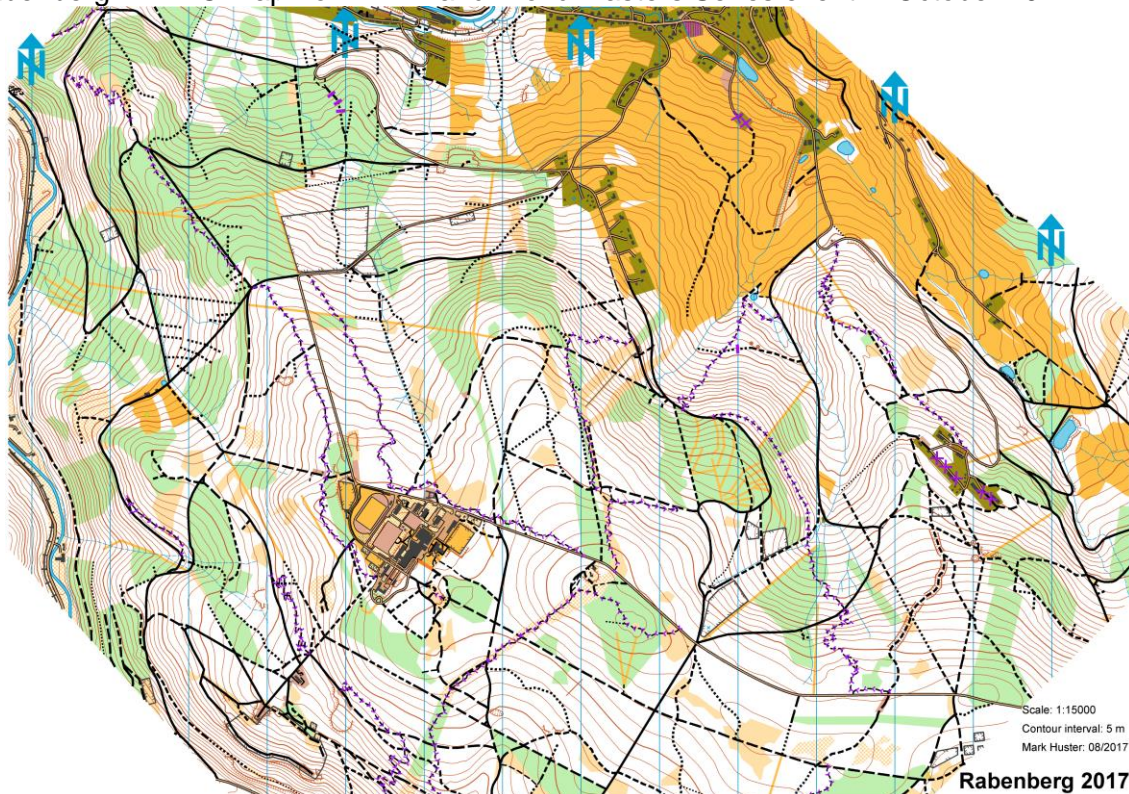
We will reserve a quota of rooms especially for media representatives. The accreditation for the event will be done via a form found on the website soon.

Your contact: Daniel Härtelt media@mtbo-deutschland.de
+49 151 614 844 65

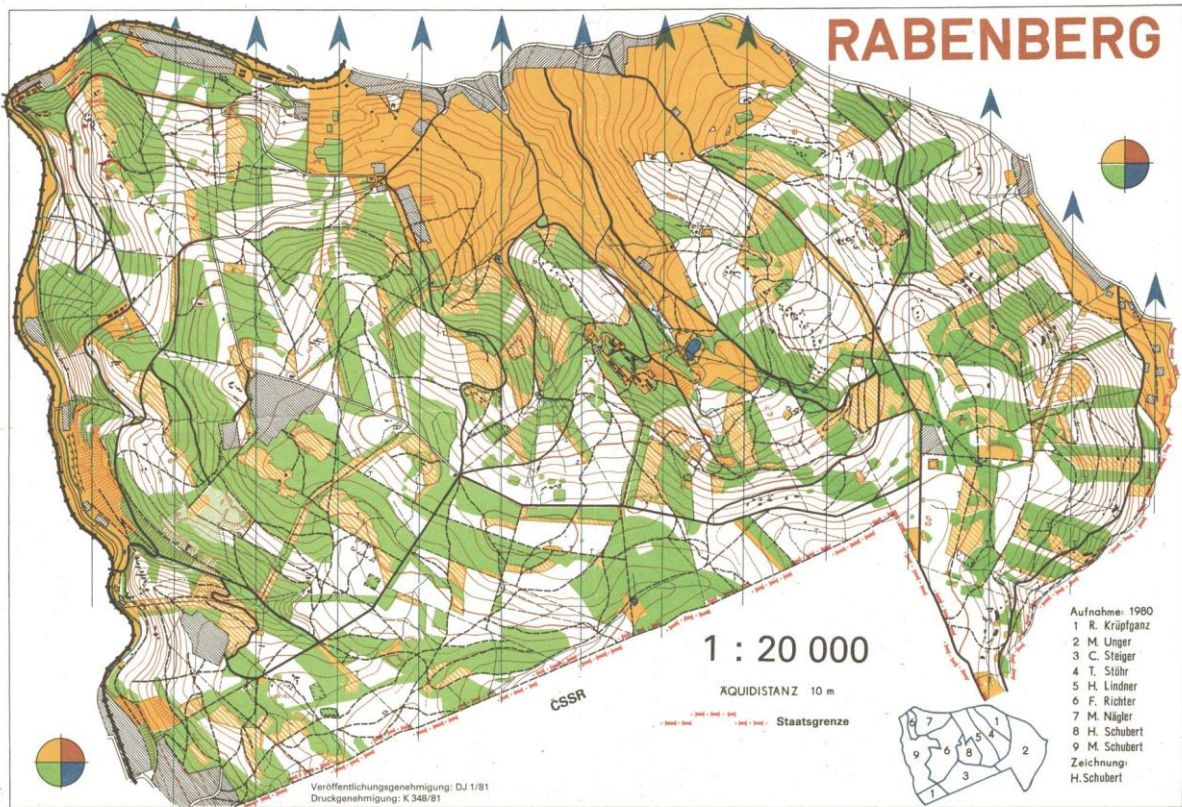
9 – PREVIOUS ORIENTEERING MAPS

Maps in higher resolution are available at the event web page.

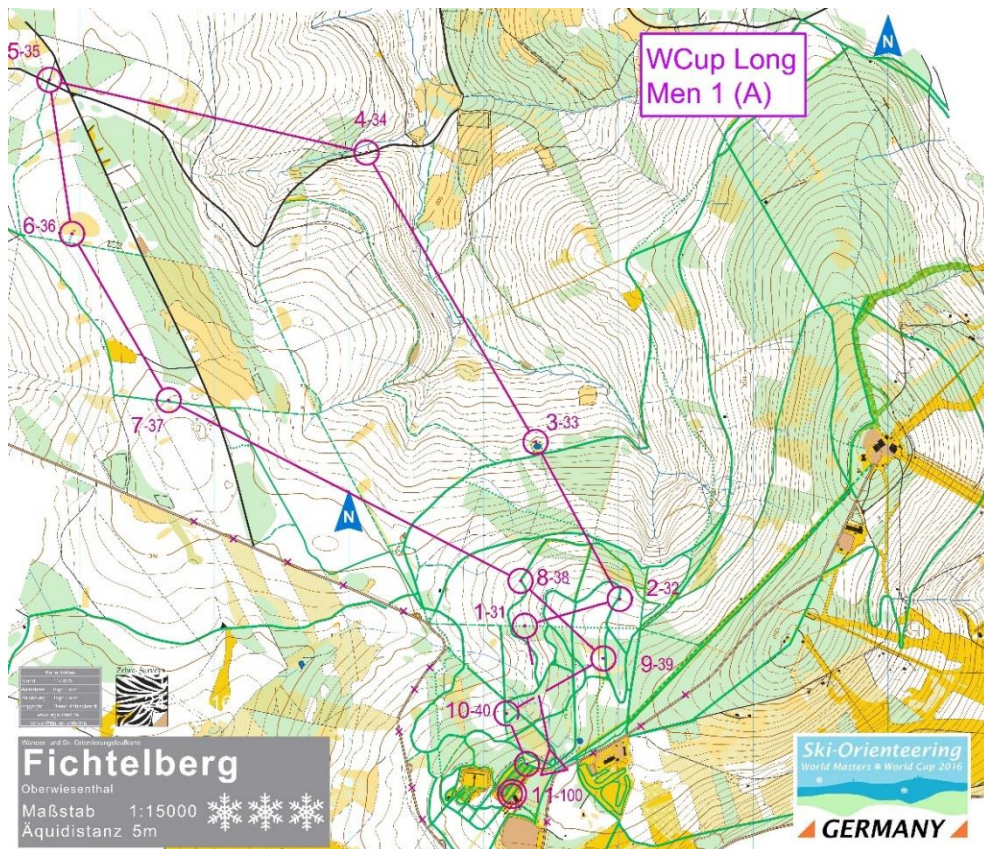
Rabenberg - MTBO map from WRE and World Masters Series event in October 2017:



Rabenberg - Foot-O map from 1980:



Fichtelberg (Oberwiesenthal) - Ski-O map from World Cup and World Masters Championship 2016:



Thalheim - MTBO map from 2014:

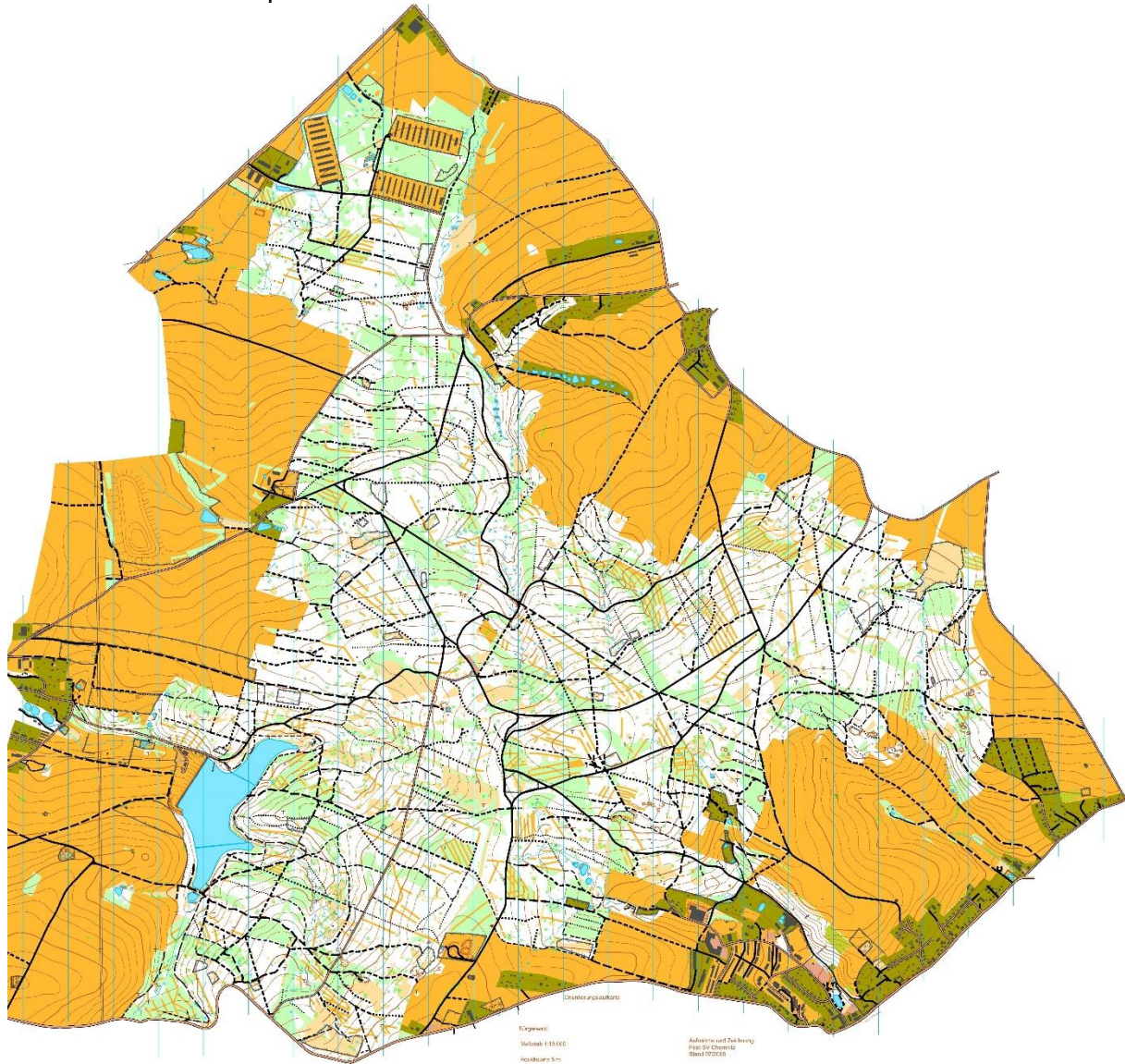


Photo front page: Daniel Härtel / Photo last page: Homepage Sportpark Rabenberg