

BULLETIN 3



2 – 6 October 2019

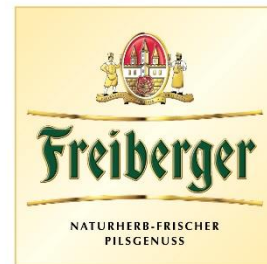
Be part of it!



CONTENT

1. GENERAL INFORMATION	3
2. COMPETITION INFORMATION	4
2.1 Competitions	4
2.2 General Program	4
2.3 Detailed preliminary time table	5
2.4 Food, bike wash and bike repair	6
2.5 Classes	6
2.6 Participation restrictions	6
2.7 Winning times and course information.....	7
3. EMBARGOED AREAS	8
4. MAPS, TERRAIN and CLIMATE	10
4.1 Maps examples, scales, and terrain descriptions	10
4.2 Special map symbols	11
4.3 Climate	12
4.4 Opportunities for training	12
5. RULES, ANTI-DOPING, and TIME KEEPING	12
5.1 Rules	12
5.2 Anti-doping	12
5.3 Time keeping	12
6. ACCOMMODATION and TRAVEL	13
6.1 Accommodation	13
6.2 Transport	13
6.3 Visas	13
7. EVENT REGISTRATION	14
7.1 Entries	14
7.2 Entry fees	15
7.3 Payment details	15
8. MEDIA SERVICES	15
9. PREVIOUS ORIENTEERING MAPS	16
10. SUMMARY OF ENTRIES	19

We thank our sponsors for their support:



We thank our partners for their support:



Breitenbrunn



Thalheim



Johannegeorgenstadt



1 – GENERAL INFORMATION

The German orienteering federation welcomes the participants and spectators to the World Cup final 2019, the World Masters Championships and the European Youth and Junior Championships at the Sportpark Rabenberg.

A beautiful landscape, lovely trails and hilly terrain are ideal for mountain biking. Sportpark Rabenberg is a place where sports tradition meets contemporary sports concepts; hundreds of athletes trained for the Olympic Games, European and World Championships in several summer and winter sports. Nowadays, the TrailCenter Rabenberg offers man-made mountain bike trails for different difficulty levels. In combination with the excellent infrastructure for winter sports and hiking opportunities, you will find a wide variety of physical and technical demanding mountain bike orienteering courses.

The surrounding is famous for ore mining in the past hundreds of years. Remnants of this epoch are visible and you can immerse yourself in these times while visiting old mines. The big cultural treasures of Saxony can be admired in the cities of Dresden and Leipzig, a 1 1/2 h car drive from the event centre.

Be part of some unforgettable competitions in mountain bike orienteering: just mark the date in your calendar, train, come and bring your family and friends to southeast Germany 2019.

Organisers Deutsche Ski-Orientierungslauf Gemeinschaft 2016 e.V.
c/o Diethard Kundisch
Altlaubegast 10
01297 Dresden
Germany

International Orienteering Federation (IOF)
Deutscher Turner-Bund e.V. (DTB)

Patron of the event Prime Minister of Saxony Michael Kretschmer

Event director Anke Dannowski
Head of club Bernd Kohlschmidt
Technical director Diethard Kundisch
Media service Daniel Härtelt

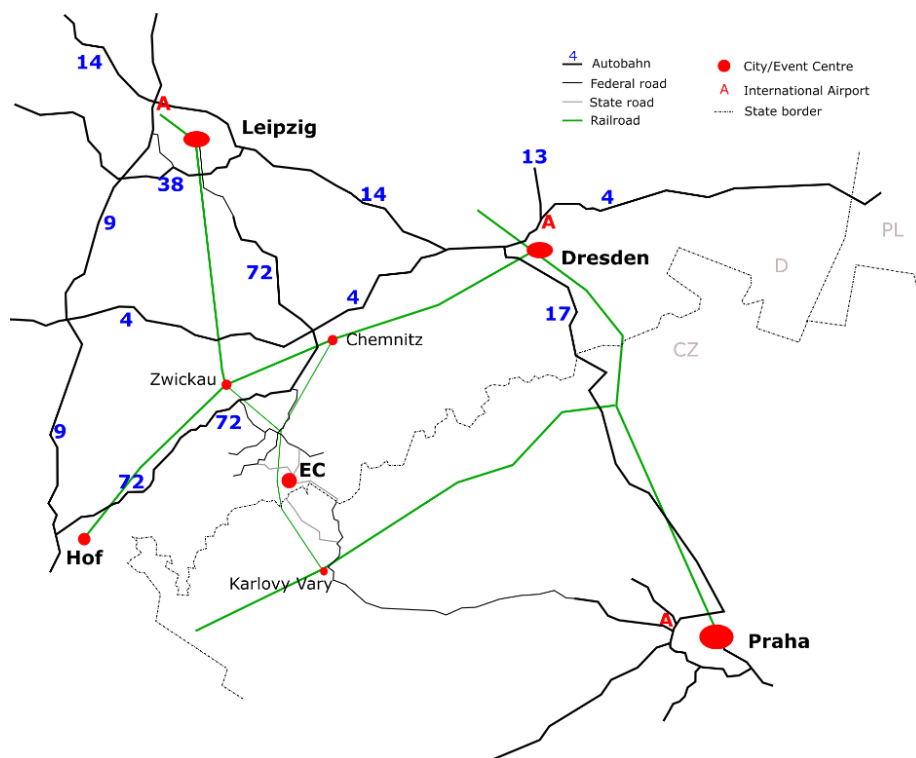
Contact +49 176 205 305 75
mtbo2019@mtbo-deutschland.de

Web page <http://2019.mtbo-deutschland.de>

IOF Event adviser Patrik Gunnarsson (SWE)
National controller Miklós Mets (HUN)

Dates 02.-06.10.2019

Venue/Event Centre Sportpark Rabenberg
08359 Breitenbrunn
GPS: 50°27'20.1"N 12°44'31.8"E / 50.455583, 12.742167



2 – COMPETITION INFORMATION

2.1 Competitions

World Cup Round 3 (WCup)
 European Youth and Junior Championships (EYJMTBOC)
 World Masters Championships (WMMTBOC)

Young Guns Series (YGS)
 World Masters Series (WMS)

Open races, including W/M-11, W/M-14, W/M35, E-Bike, Trail-O

2.2 General Program

		General	Elite	Youth and Juniors	Masters
02.10.	Wednesday	Arrival / Training			
			Model Event 14-16 Start at Sportpark Rabenberg		
03.10.	Thursday	Arrival / Training Open Competition	Model Event	Middle	Middle
04.10.	Friday	Trail-O Open Competition	Long	Long	Long
05.10.	Saturday	Open Competition Banquet	Mixed-Relay	Relay	Mass start
06.10.	Sunday	Open Competition Departure	Sprint	Sprint	Sprint

2.3 Detailed preliminary time table

National holiday:

Be aware that the 3rd of October (Thursday) is a national holiday in Germany. Basically all shops are closed on this day, however gas stations often having small shops should be open.

Preliminary time table:

Wednesday 02.10.2019	Elite	Juniors/Youth	Masters	Open
10-20 (with breaks)	Event Centre open			
12		Start group allocation middle		
12-13	Lunch			
14-16	Model event with start at Sportpark Rabenberg			
free	Free training at model event map			
18-19	Dinner			
19		Team leaders meeting		
19:30			Info session afterwards	social gathering

Thursday 03.10.2019	Elite	Juniors/Youth	Masters	Open
7-9 / 16-20	Event Centre open			
8-14	Event office Thalheim			
6-9	Breakfast			
10 until last start	Finish quarantine			
10		Middle in Thalheim		
14:00	Opening and prize giving in Thalheim			
12		Start group allocation long		
12-13	Lunch			
15-17	Model event with start at Sportpark Rabenberg			
free until 17	Free training at model event map			
17	Model event area is closed until end of Long			
18-19	Dinner			
19		Team leaders meeting		

Friday 04.10.2019	Elite	Juniors/Youth	Masters	Open
8-20	Event Centre open			
	Model event area is closed until end of Long			
6-9	Breakfast			
9		Long at Sportpark Rabenberg (Masters and Youth)		
9-12	Finish quarantine			
~11:30	First start Long (Elite and Juniors)			
12 until last start	Start quarantine			
14		Start group allocation relay		
14-16				Trail-O
17-18	Prize giving and social gathering			
18-19	Dinner			
19		Team leaders meeting		

Saturday 05.10.2019	Elite	Juniors/Youth	Masters	Open
7-8 / 17-20	Event Centre open			
9-16	Event office Fichtelberg			
6-9	Breakfast			
free	Training at Sportpark Rabenberg			
9-11:30	Finish quarantine			
9			Mass start at Fichtelberg	
12		Start group allocation sprint		
11:30- ~13:15	Start quarantine until the start of the 6ed nation of the 3rd leg in all categories			
12		Relays at Fichtelberg		
18		Team leaders meeting		
19	Prize giving / BBQ with live music			

Sunday 06.10.2019	Elite	Juniors/Youth	Masters	Open
5	City centre of Johanngeorgenstadt (Mittelstadt) is closed for all competitors and people that want to communicate with competitors prior their finish.			
7-8	Event Centre open			
8:30-14	Event office Johanngeorgenstadt			
6-9	Breakfast			
9:30	Sprint in Johanngeorgenstadt (Masters and Youth)			
9:30-10:50	Finish quarantine			
~11:00	First start Sprint (Elite and Juniors)			
10:50-until last start	Start quarantine			
14	Prize giving / departure			

Parallel to the main competitions we offer open races for W/M-11, W/M-14, W/M21 and W/M35 age classes. E-Bike riders can ride an open course every day.

On Friday, 4th of October, you can take part in Trail-O on a special map directly in the Event Centre. This is a good opportunity to try out Trail-O and also might be a good warm-up or cool-down. Regular Trail-O participants will enjoy the course as well.

2.4 Food, bike wash and bike repair

After the races (middle, long and sprint) local food and drinks (cold/warm/vegetarian in a simple style) are offered in the competition centres and/or finish quarantines (payment in cash only).

Bike wash will be available at the Event Centre every day. Additionally, it is provided in the finish arena of the middle distance and the mass start/relay.

In the case parts of your bike break during competition or training, a bike service will be active from Friday morning to Sunday morning in the event centre Sportpark Rabenberg. However, the diversity of bike parts is incredibly large, so our bike service has only a small selection of replacement parts needed to fix your bike. Don't forget to bring your own special replacement parts. Bike shops are in Chemnitz and are open on Friday and Saturday.

We organise a BBQ with music of a live band on 5th of October. You can register via the event website until 25th of September. See prizes and register at the event website: <https://2019.mtbo-deutschland.de/index.php/registration-bbq.html>

2.5 Classes

World Cup
EYJMTBOC
WMMTBOC

W/M 21; mixed in relay

W/M-17 and W/M-20

W/M 40, 45, 50, 55, 60, 65, 70, 75, 80, 85, ...

(Two adjacent classes in the same decade shall be merged if either or both have fewer than 5 entries. W/M 70 and older keep the 5 year steps independent on registered starters)

YGS
WMS+
Open

W/M-17, W/M-20

W/M 35

W/M-11, W/M-14, Open-Short, E-Bike
Trail-O

2.6 Participation restrictions

World Cup

Each federation may enter a team of 12 competitors - up to 6 women and 6 men in each individual event and an unlimited number of team officials.

Each federation may enter a maximum of 4 teams of 3 riders in the mixed-relay. Each team must include at least one woman.

EYJMTBOC

For each individual competition a Federation may enter a maximum of 6 competitors in each class born in 1999 or later in W/M-20 and 2002 or later in W/M-17. The organising Federation may have two additional competitors as official EYJMTBOC competitors in the individual competitions.

Each federation may enter a maximum of 2 teams of 3 riders in each class in the relay.

WMMTBOC

Participation in WMMTBOC is open to all competitors according to their age classes.

2.7 Winning times and course information

Preliminary course details can be found in the table. They might be subject to small adjustments due to forest work or changed numbers of registered competitors or other circumstances.

Classes	Length Shortest sensible [km]	Length Straight line [km]	Total climb [m]	Controls number	Winning time [min]	Refreshment Number
Middle – 03.10.						
M20	14.7	10.1	275	22	40-45	-
W20	12.9	8.7	250	20	40-45	-
M17	9.7	7.0	195	17	32-37	-
W17	8.5	6.0	115	14	32-37	-
M40/M45/M35	18.4	12.2	305	25	50-55	-
M50	16.5	11.2	285	23	50-55	-
M55	16.1	11.0	285	23	50-55	-
W40/W45/ W35	14.7	10.1	275	22	50-55	-
M60/M65	14.9	10.3	275	21	50-55	-
W50/W55	12.9	8.7	250	20	50-55	-
W60/W65/M70/M75	9.7	7.0	185	17	50-55	-
W70/W75/M80/M85	7.8	4.9	120	14	50-55	-
W/M-14	5.4	4.3	90	13	30-40	-
W/M-11	3.9	3.0	65	8	30-40	-
Open/E-Bike	14.7	10.1	275	22		-
Long – 04.10.						
M21	39.5	26.2	1200	17	105-115	1
W21	32	21.4	825	16	105-115	1
M20	30.5	22.5	825	16	85-90	1
W20	21	16.5	575	14	85-90	1
M17	23.5	14.4	550	13	70-75	1
W17	13.5	10.0	175	12	70-75	1
M40/M45/M35	33.5	22.6	975	16	105-115	1
W40/W45/W35	25	15.8	600	12	105-115	1
M50	31.5	19.7	775	18	105-115	1
M55	31.0	19.4	700	17	105-115	1
W50/W55	23.5	14.4	550	15	105-115	1
M60/M65	25.5	17.1	425	13	105-115	1
W60/W65	17.5	12.2	350	12	105-115	1
M70/M75	18	13.6	350	12	105-115	1
W70/W75/M80/M85	13.5	10.0	175	9	105-115	1
W/M-14	14.5	10.6	325	9	65-75	0
W/M-11	6.5	4.8	125	6	45-55	0
Open/E-Bike	25	15.8	600	12		0

Classes	Length Shortest sensible [km]	Length Straight line [km]	Total climb [m]	Controls number	Winning time [min]	Refreshment Number
Relay – 05.10.						
Mixed-21	15.7	10.7	335	18	40-45	1/TechZone
M20	13.9	9.1	310	15	35-40	1/TechZone
W20	12.2	8.3	250	15	35-40	1/TechZone
M17	11.5	7.8	235	15	30-35	1/TechZone
W17	10.3	6.9	200	13	30-35	1/TechZone
Mass start – 05.10.						
M40/M45	21.9	13.4	520	35	75-85	1 at ~70%
M50/M55	19.5	12.4	490	33	75-85	1 at ~70%
W40/W45/M60/M65	17.8	11.9	450	32	75-85	1 at ~70%
W50/W55	14.2	9.1	385	25	75-85	1 at ~70%
W60/W65/M70/M75	11.2	7.5	345	21	75-85	1 at ~70%
W70/W75/M80/M85	9.3	6.3	290	21	75-85	-
W/M-14	8.2	5.5	245	16	50-60	-
W/M-11	4.8	3.1	150	13	50-60	-
Open/E-Bike	17.8	11.9	450	32	-	-
Sprint – 06.10.						
M21	8.6	6.3	105	34	20-25	-
W21	7.3	5.3	90	31	20-25	-
M20	6.9	5.1	80	29	15-20	-
W20	6.4	4.7	60	28	15-20	-
M17	5.6	4.3	70	27	15-20	-
W17	4.6	3.7	50	23	15-20	-
M40/M45	7.1	5.3	90	30	20-25	-
M50/M55	6.9	5.1	80	29	20-25	-
W40/W45/M60/M65	6.4	4.7	60	28	20-25	-
W50/M55	5.6	4.3	70	27	20-25	-
W60/W65/M70/M75	4.6	3.7	50	23	20-25	-
W70/W75/M80/M85	4.4	3.6	45	21	20-25	-
W/M-14	3.8	2.9	25	19	15-20	-
W/M-11	2.2	1.9	10	13	15-20	-
Open/E-Bike	6.4	4.7	60	28	-	-

3 – EMBARGOED AREAS

The areas marked on the maps are embargoed for all orienteering activities, unless specifically permitted by the organisers. Two types of embargoed areas exist (orange and red):

The red embargoed areas are full embargoed zones. They are out of bounds for all potential participants and team members, including competitors, team leaders, coaches, doctors, escorts, and any other person who through their knowledge of the terrain may influence the results of the competitions.

Following applies for red embargoed areas:

- **Potential participants and team members are not allowed to visit these areas with or without a map. This means no orienteering activity, no bike training session in the trail park or a leisurely activity of any kind is allowed.**

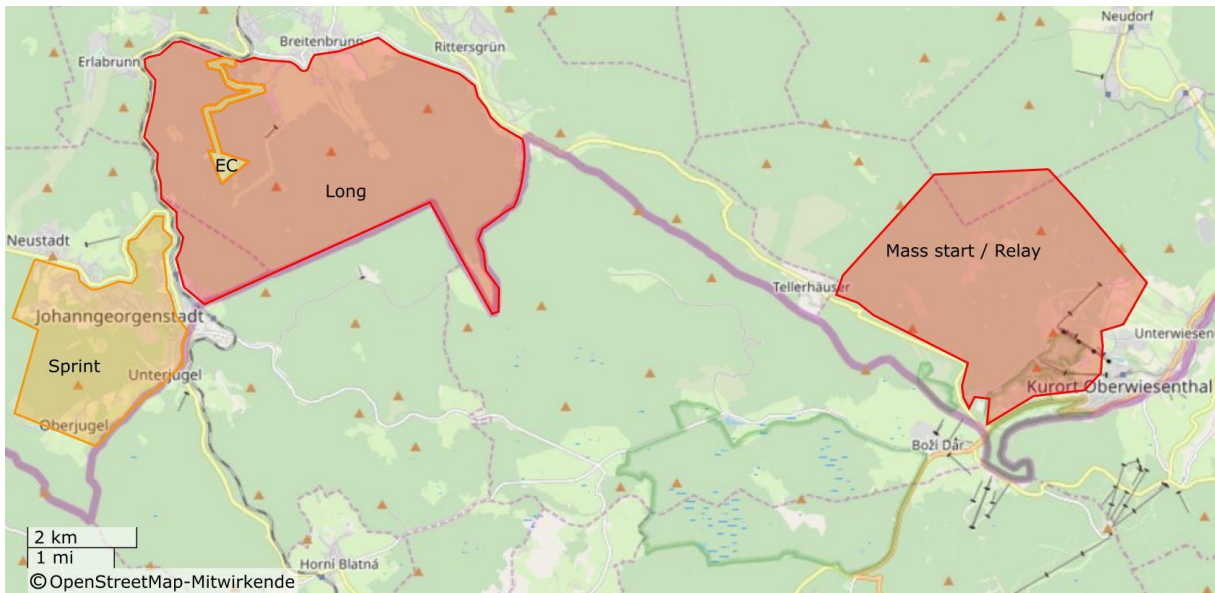
The orange embargoed areas are partially embargoed. These areas can be visited without an orienteering map. Visitors have to stay on the public road network. Any orienteering activity is restricted and it is strictly forbidden to do route testing.

Following applies for orange embargoed areas:

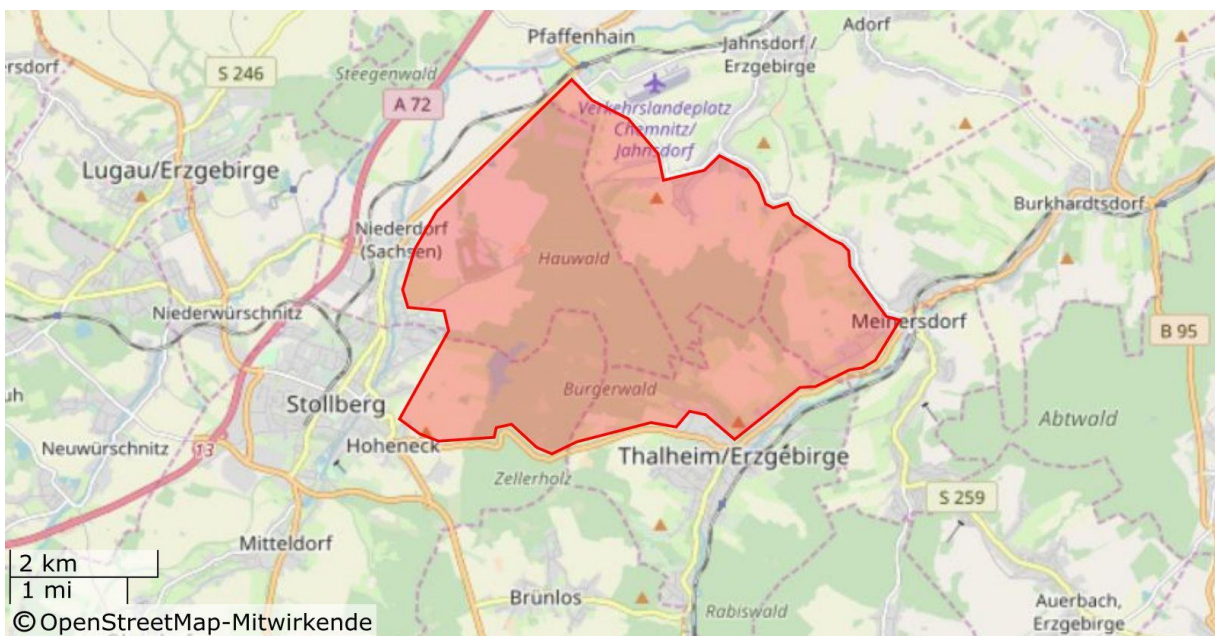
- **No orienteering activity may take place in the area.**
- **No training sessions may take place in the area.**

The **model event map** is part of the embargoed area for the long distance. From 10:00 on 2nd of October the area shown on the model event map is open for training until 3rd of October 17:00. **Don't leave the model event map towards the race area!! After 17:00 on 3rd of October** the model event map is embargoed area again until the last finish of the Long distance competition. Afterwards you can enjoy the Rabenberg trails and tracks.

The **city centre of Johannegeorgenstadt (Mittelstadt)** will be **closed from 5:00 on 6th of October** until the finish of the competitor. This is valid for all competitors and people that want to communicate with competitors prior their finish. A detailed area will be shown in Bulletin 4.



Access to the Event Centre is allowed following the official road from the North. The road is shown in the map as the orange sector in the embargoed area for Long distance.



4 – MAPS, TERRAIN and CLIMATE

4.1 Maps examples, scales, and terrain descriptions

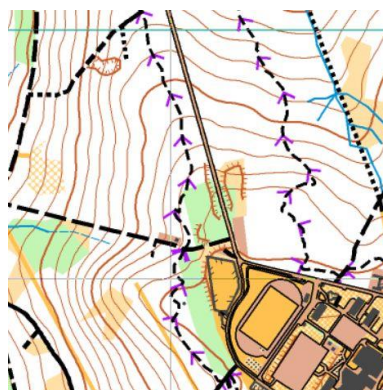
Middle

Map: Bürgerwald – Thalheim
Scale/Contour: 1 : 10 000 / 5 m
Terrain: The competition area has an altitude between 430 m and 560 m. It comprises of a medium dense track network with all kinds of rideability. The area has only a few steep climbs but is in general a smooth hilly terrain.
Distance from EC: 36 km (50 min) by car



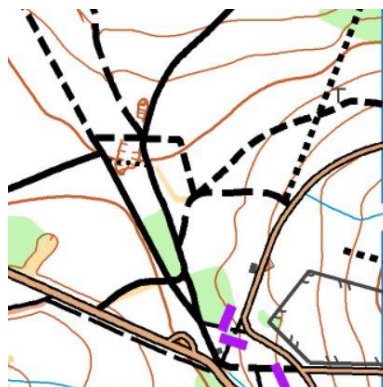
Long

Map: Rabenberg
Scale/Contour: 1 : 15 000 / 5 m
Terrain: The competition area has an altitude between 600 m and 900 m. It comprises of a medium dense track network with all kinds of rideability. A mountain bike trail network will be used in the competitions. Some of them are one way. The area has plenty of steep climbs and descents and some flat sections. It will demand you physically.
Distance from EC: 0 m



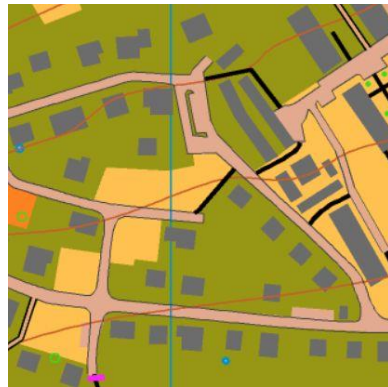
Relay/Mass start

Map: Oberwiesenthal
Scale/Contour: 1 : 10 000 / 5 m
Terrain: The competition area has an altitude between 1050 m and 1200 m. However only a few courses will see the top of Fichtelberg. It comprises of a dense to medium dense track network with all kinds of rideability. Part of the courses will be within the ski track network and within the ski arena. The area offers a good mixture of climbs, descents, and flat sections.
Distance from EC: 23 km (30 min) by car
18 km (350 m climb) by bike



Sprint

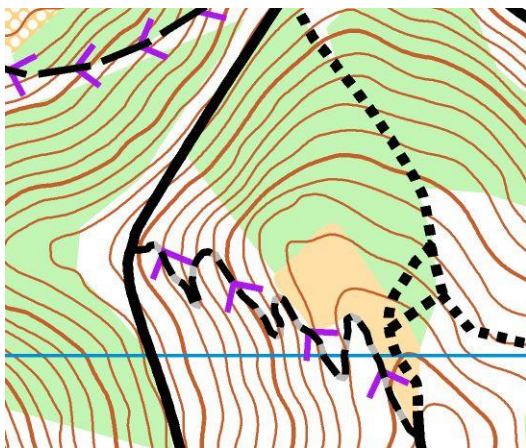
Map: Johanngeorgenstadt
Scale/Contour: 1 : 5 000 / 5 m
Terrain: The competition area has an altitude between 880 m and 740 m. It comprises of a mixture of urban area, open land and forest areas with a medium to dense road and track network in general fast rideable. The start will be higher than the finish, most courses will climb only a few meters in smooth climbs.
Distance from EC: 13 km (17 min) by car
7 km (190 m climb) by bike



4.2 Special map symbols

Two special symbols will be used:

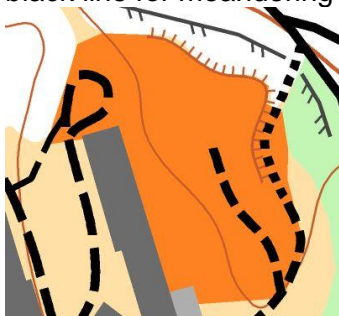
- (1) Winding tracks will be drawn as on the image below with 25% grey colour under the black line to show the rider the course of the track. This symbol is used on any kind of meandering track and trail, independent if it is a MTB single trail. The symbol has been used in the MTBO camp in Denmark and during the WMTBOC in Denmark 2019.
- (2) In the long distance area, MTB single trails exist that can be used only in one direction. The direction of usage will be indicated by arrows in magenta as shown in the image below. Riding, running or walking along those trails in the wrong direction will lead to disqualification.
- (3) The testing symbol for rideable area2 (orange colour) as shown in ISMTBOM 2010, appendix 1 (p. 16) will be used for areas where off-track riding is allowed. It will also be used to show indistinct junctions.



One way tracks and 25% grey under the black line for meandering tracks.



Indistinct junction



Off-track riding is allowed in orange areas. Rideability is not shown by that symbol and can differ from very good to very slow.

4.3 Climate

Sportpark Rabenberg is situated 860 m above sea level. The average temperature in beginning of October is around 11° C. However, the day temperature can vary strongly between 6° and 20° C. Mean temperature during night 3-8° C. Beginning of October is one of the driest periods in this area with average rain of ~16 days per month. The average precipitation is ~71 mm for October.

The area for the middle distance is situated ~500 m above sea level. While temperatures are about 5° higher, the amount of rain is similar compared to Sportpark Rabenberg.

4.4 Opportunities for training

German and Czech MTBO series:

<http://mtbo-deutschland.de/index.php/eventlist-RL.html>

<https://www.mtbo.cz/zavody/kalendar-zavodu/>

No special training camp is planned.

Elite can use the middle distance as training event.

The model event will start at Sportpark Rabenberg. It will be most relevant for the long distance terrain. Don't leave the map, else you will be in the embargoed zone.

5 – RULES, ANTI-DOPING, and TIME KEEPING

5.1 Rules

The competitions for all age classes will be organized in accordance with the Competition Rules for IOF MTB Orienteering Events, valid from 1st January 2019 and the Special Rules for the World Cup.

All Competition Rules for IOF MTBO rules are available here:

<https://orienteering.org/mtb-orienteering/rules/>

In general riding, running, walking off the tracks will be strictly forbidden for all disciplines. Symbol 839 (orange area or orange stripe) will be used where off-track riding is allowed, as shown in ISMTBOM 2010, appendix 1 (p. 16). There might be controls situated outside paths/tracks or roads only on the symbol 839.

In the long distance area, MTB single trails exist that can be used only in one direction. The direction of usage will be indicated by arrows in magenta. Riding, running or walking along those trails in the wrong direction will lead to disqualification.

5.2 Anti-doping

Doping is forbidden. The IOF Anti-Doping Rules apply to all age classes of this event and the IOF Council may require doping control procedures to be conducted. It is the responsibility of competitors to obtain any required TUE (therapeutic use exemption) certificate.

5.3 Time keeping

The electronic punshing system SPORTident Air+ with a working range of 180 cm will be used in all competitions.

All competitors have to use an ActiveCard (SIAC). Other SI cards will not work with the system. Rental will be possible for 4 Euro per day. You can also buy a SIAC in the event centre.

No back-up system will be provided by the organiser.

6 – ACCOMMODATION and TRAVEL

6.1 Accommodation

The event centre Sportpark Rabenberg offers several categories of accommodation from hotel to caravan and tent. They can offer up to 400 beds, while only half of them are blocked for MTBO for the moment in houses 2, 3 and 8.

Booking of the accommodation is done via Sportpark Rabenberg, directly. Please refer to "MTBO 2019". To have the competitions as fair as possible and in case you choose not to live at the event centre directly, we kindly ask athletes starting in the World Cup (elite) not to choose an accommodation in the city area of Johannegeorgenstadt.

Web page for the Event Centre: <http://www.sportpark-rabenberg.de/>

Accommodation		Meals	
House 3/8	32,00 € p. pers./night	Adults / Half board	17,00 € p. pers./day
House 2	34,00 € p. pers./night	Adults / Full board	22,50 € p. pers./day
House 1	37,50 € p. pers./night		
Extra fee for single room	15,00 € p. pers./night	Childs 9-13 years / Half board	12,50 € p. child/day
Extra fee for only 1 night	12,00 € p. pers./night	Childs 9-13 years / Full board	16,50 € p. child/day
Spot for a caravan		Meals can be booked for tents and caravans as well.	
Spot for a tent			
Person in tent or caravan	8,50 € p. pers./night (discount for children)		
Power	2,00 € per night		
Shower	1,00 € per chip		
Dog	2,50 € per night		

6.2 Transport

No transport is offered by the organisers between the event centre and the competition arenas. We recommend to use private or rental cars to reach the event centre from your living area or the nearby airport. Competition arenas for long distance, mass start, and sprint are within cycling distance. Middle distance is a 50 min car drive.

Public transport (train) is available from all German Airports to Johannegeorgenstadt. There is limited space in ICE or IC trains for bicycle boxes. For transport of a build-up bicycle a reservation at least 24 h in advance is required. For local trains (RE or RB) no reservations are necessary but an extra ticket for the bike is required.

6.3 Visas

EU nationals do not require a visa to enter the Federal Republic of Germany. In general, all other foreigners require a visa for stays in Germany. A visa is not required for visits of up to 90 days in an 180-day period for nationals of those countries for which the European Community has abolished the visa requirement. You will find an overview on visa requirements here:

→ [Table of countries whose citizens require/do not require visas to enter Germany](#)

7 – EVENT REGISTRATION

7.1 Entries

Entries for World Cup, Youth and Junior European Championships and Masters World Championships shall be done via the [IOF Eventor](#). Open racers can enter via the event website.

World Cup Elite and European Youth and Junior Championships:

Team size entry by August 21st 2019

Following information is required for registration:

- Federation
- Total number of competitors of each gender
- Number of competitors in each competition
- Number of relay teams
- Number of team officials
- Name of team manager, e-mail address and mobile phone number
- Number of rental SIAC

Late entries and changes will be accepted if possible. After the entry of team size, additional entries may be made with a surcharge of 20% or more (specified in the table below). Withdrawals receive an 80% refund.

Team names entry by September 22th 2019

- Each competitor's family name and first name, gender, year of birth and the competition in which they will compete and SIAC number
- Names of the team officials

Late entries and changes are accepted if possible until 2 days before race day. After the team names deadline additional entries incur a surcharge of 50%, withdrawals receive a 50% refund.

World Masters Championships:

Entry by August 21st 2019 including full payment

Following information is required for registration:

- Family name and first name
- Club or place of residence
- Gender and year of birth
- Competition in which they will compete
- SIAC number

Late entry by September 22nd 2019 including payment with a surcharge of 20% or more (specified in the table below). Withdrawals receive an 80% refund.

Late entries after the 22.09.2019 and changes are accepted if possible. After this deadline until 3 hours prior the race additional entries incur a surcharge of 50%, withdrawals until the day prior the race receive a 50% refund.

7.2 Entry fees

All entry fees in Euro. W/M-11, W/M-14 ride for free. Trail-O for 5 Euro per participant. Rent of SIAC is 4 Euro per day.

Name	WCup	WMMTBOC	EYJMTBOC	Open / YGS / E-Bike
Accreditation fee	50 (60 / 75)	50 (60 / 75)	20 (25 / 30)	
Middle		35 (45 / 50)	20 (25 / 30)	15 (15 / 20)
Long	35 (45 / 50)	35 (45 / 50)	20 (25 / 30)	15 (15 / 20)
Mass start / Relay	105 per Team	35 (45 / 50)	60 per Team	15 (15 / 20)
Sprint	35 (45 / 50)	35 (45 / 50)	20 (25 / 30)	15 (15 / 20)

Fees in table for payment due to: 21.08.2019 (22.09.2019 / race day). Fees include a map fee of 12.25 Euro per day.

7.3 Payment details

Account holder: DSOG 2016 e.V.
Address: c/o Diethard Kundisch
Altlaubegast 10
01297 Dresden
IBAN: DE31 8509 0000 2683 1610 07
SWIFT/BIC: GENODEF1DRS
Bank: Dresdner Volksbank Raiffeisenbank eG

All charges/bank fees are to be paid by the sender.

8 – MEDIA SERVICES

Media representatives are invited to our event. As media representatives, you benefit from our experience of 10 years reporting from orienteering events all over the world. We have deliberately chosen a concept of short distances and offer you a wide variety of support for journalists, photographers and television staff. Ideal conditions for us means amongst others very detailed media information, a reasonable internet connection, good photo and good TV positions during the competitions, and a press centre where you can work without any time pressure after the competitions. Experienced media team members will guide you through the competition days.

Event centre, press centre and hotel - everything is concentrated at Sportpark Rabenberg. The press centre is located in a separate building at the event centre.

If you are interested, we invite you to get impressions of the region outside the event.

We will reserve a quota of rooms especially for media representatives. The accreditation for the event will be done via a form found on the website soon.

Your contact: Daniel Härtelt media@mtbo-deutschland.de
+49 151 614 844 65

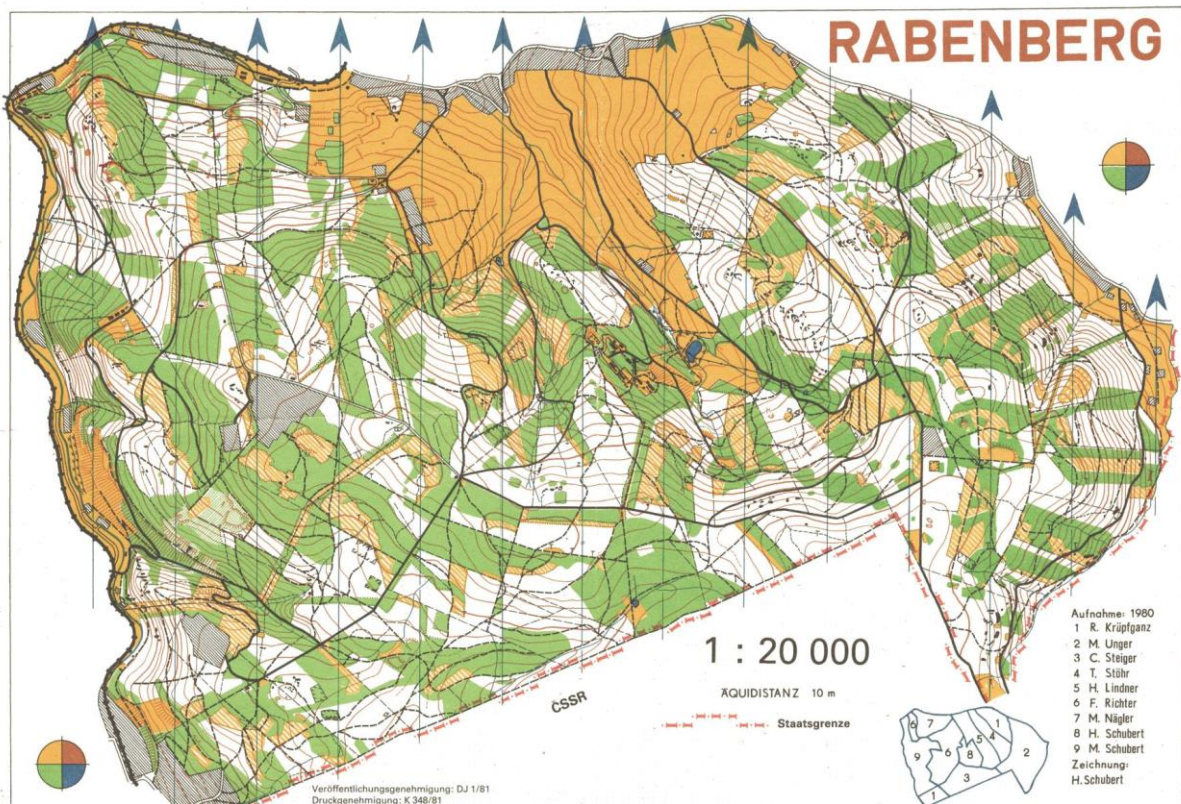
9 – PREVIOUS ORIENTEERING MAPS

Maps in higher resolution are available at the event web page.

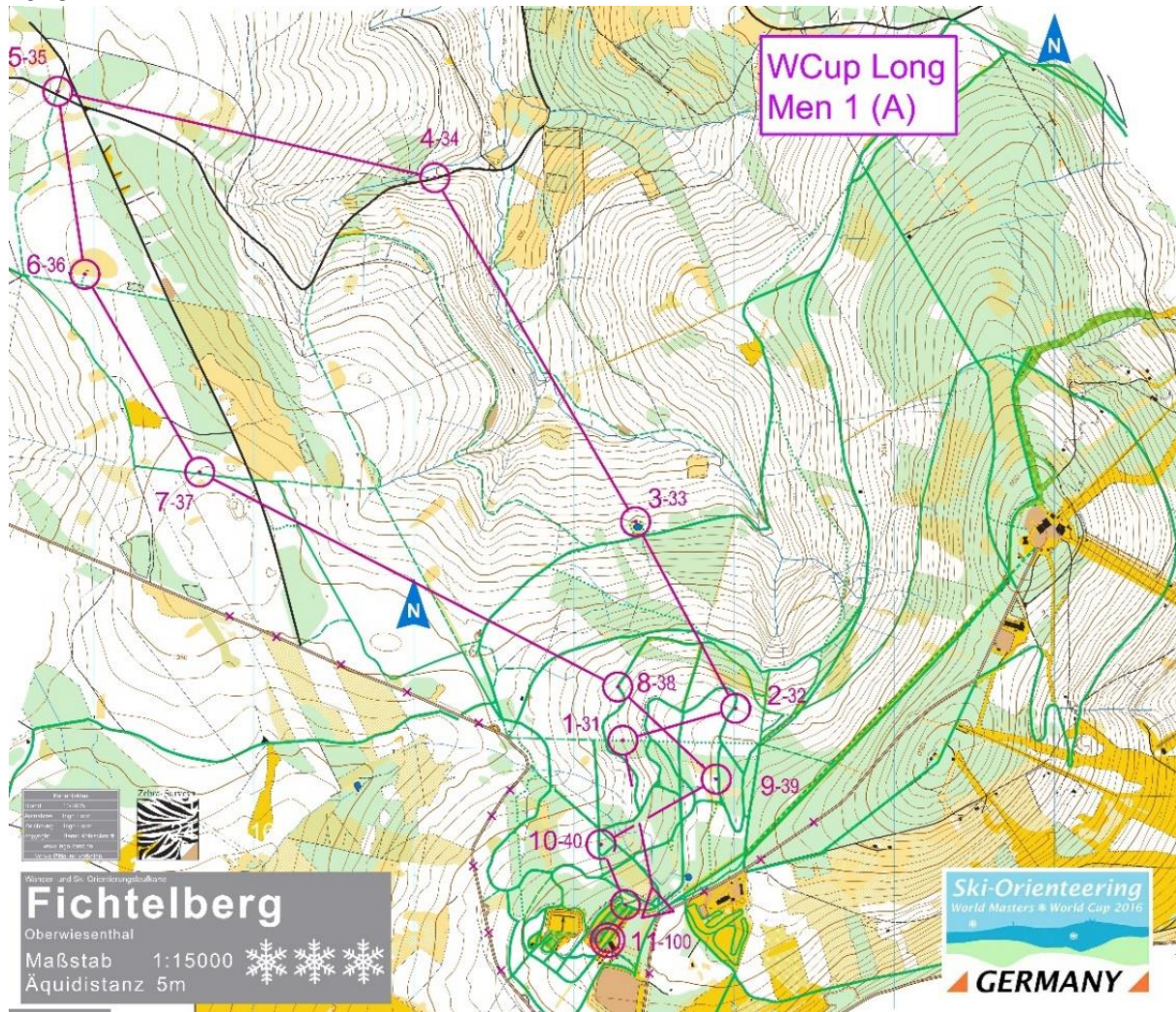
Rabenberg - MTBO map from WRE and World Masters Series event in October 2017:



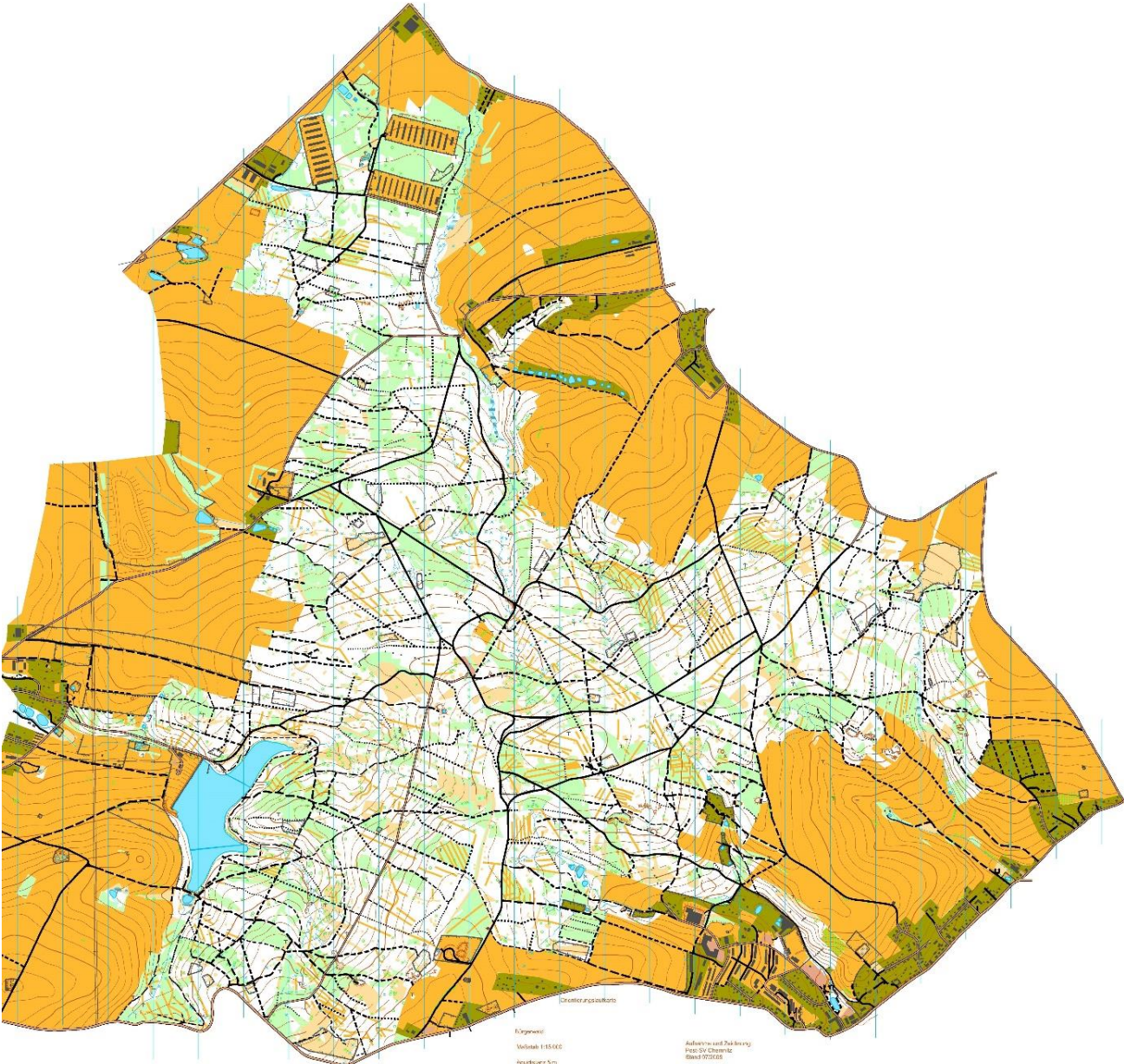
Rabenberg - Foot-O map from 1980:



Fichtelberg (Oberwiesenthal) - Ski-O map from World Cup and World Masters Championship 2016:



Thalheim - MTBO map from 2014:



10 – SUMMARY OF ENTRIES

Entries for World Cup Final Round 3:

Federation	Men	Women	Total
Austria	4	2	6
Czech Republic	6	6	12
Denmark		1	1
Estonia	2	1	3
Finland	4	4	8
France	5	2	7
Germany	6	2	8
Great Britain		1	1
Hungary	1		1
Italy	6		6
Japan		1	1
Lithuania	3	2	5
Poland	2	1	3
Portugal	5	1	6
Russian Federation	6	6	12
Slovenia	1		1
Spain	3		3
Sweden	3	3	6
Switzerland	2	1	3
Turkey		1	1
Ukraine	2	1	3
Sum	61	36	97

Entries for Youth and Junior European Championship:

Federation	Men 20	Women 20	Men 17	Women 17	Total
Austria	3	1	3	2	9
Czech Republic	3	3	3	3	12
Denmark	3	5	1		9
Estonia		1			1
Finland	5	4	6	4	19
France	3	3	3	3	12
Germany			3		3
Great Britain			1		1
Hungary		1	1		2
Italy				1	1
Latvia	1		1		2
Lithuania	3	2	2	2	9
Poland	2		1	3	6
Portugal		1	4		5
Russian Federation	6	6	6	6	24
Spain	2	2	3	1	8
Switzerland	2				2
Sum	33	29	38	25	125

Entries for World Masters Championships:

Country	2019-08-21	2019-09-22	2019-10-01	Sum
Australia	4	0	0	4
Austria	9	0	0	9
Belgium	4	0	0	4
Czech Republic	36	1	0	37
Denmark	37	0	0	37
Estonia	4	0	0	4
Finland	18	0	0	18
France	14	0	0	14
Germany	40	0	0	40
Great Britain	12	0	0	12
Hungary	5	0	0	5
Italy	7	0	0	7
Japan	4	0	0	4
Latvia	1	0	0	1
Lithuania	9	0	0	9
New Zealand	3	0	0	3
No club membership	3	0	0	3
Poland	1	0	0	1
Portugal	1	0	0	1
Russian Federation	8	0	0	8
Slovakia	1	0	0	1
Slovenia	3	0	0	3
Spain	6	0	0	6
Sweden	27	0	0	27
Switzerland	11	0	0	11
Turkey	1	0	0	1
Sum	269	1	0	270



Photo front page: Daniel Härtelt / Photo last page: Homepage Sportpark Rabenberg